

## **Summer Eliminator PBA Oil Patterns**

**June 2<sup>nd</sup>: 38' Holman**

**June 9<sup>th</sup>: 42' Roth**

**June 16<sup>th</sup>: 45' Dragon**

**June 23<sup>rd</sup>: 39' Aulby**

**June 30<sup>th</sup>: 46' Petraglia**

**July 7<sup>th</sup>: 38' Holman**

**July 14<sup>th</sup>: 42' Roth**

**July 21<sup>st</sup>: 45' Dragon**

**July 28<sup>th</sup>: 39' Aulby**

**August 4<sup>th</sup>: 46' Petraglia**

# 2021 PBA HOLMAN 38



Oil Pattern Distance: **38 Feet**  
 Forward Oil Total: **16.8 mL**  
 Forward Boards Crossed: **336 Boards**

Reverse Brush Drop: **35 Feet**  
 Reverse Oil Total: **11.9 mL**  
 Reverse Boards Crossed: **238 Boards**

Oil Per Board: **50 uL**  
 Volume Oil Total: **28.7 mL**  
 Total Boards Crossed: **574 Boards**

Start	Stop	Loads	Speed	Crossed	Start	End	Feet	T.Oil
1	2L 2R	2	14	74	0.0	1.9	1.9	3700
2	4L 4R	1	18	33	1.9	4.4	2.5	1650
3	6L 6R	2	18	58	4.4	9.5	5.1	2900
4	7L 7R	4	18	108	9.5	19.7	10.2	5400
5	10L 10R	3	18	63	19.7	27.3	7.6	3150
6	2L 2R	0	22	0	27.3	38.0	10.7	0

Start	Stop	Loads	Speed	Crossed	Start	End	Feet	T.Oil
1	2L 2R	0	22	0	38.0	29.0	-9.0	0
2	11L 11R	2	18	38	29.0	23.9	-5.1	1900
3	9L 9R	4	14	92	23.9	16.0	-7.9	4600
4	8L 8R	2	14	50	16.0	12.1	-3.9	2500
5	6L 6R	2	14	58	12.1	8.2	-3.9	2900
6	2L 2R	0	14	0	8.2	0.0	-8.2	0

Conditioner:  
Type In or Select One

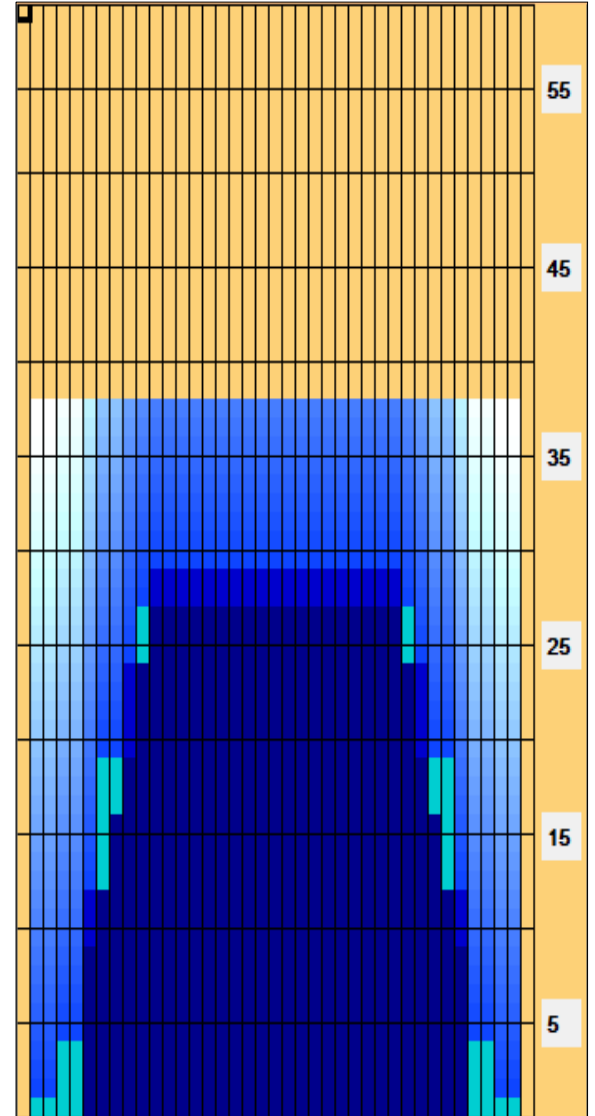
TransferType:  
Type In or Select One

Forward

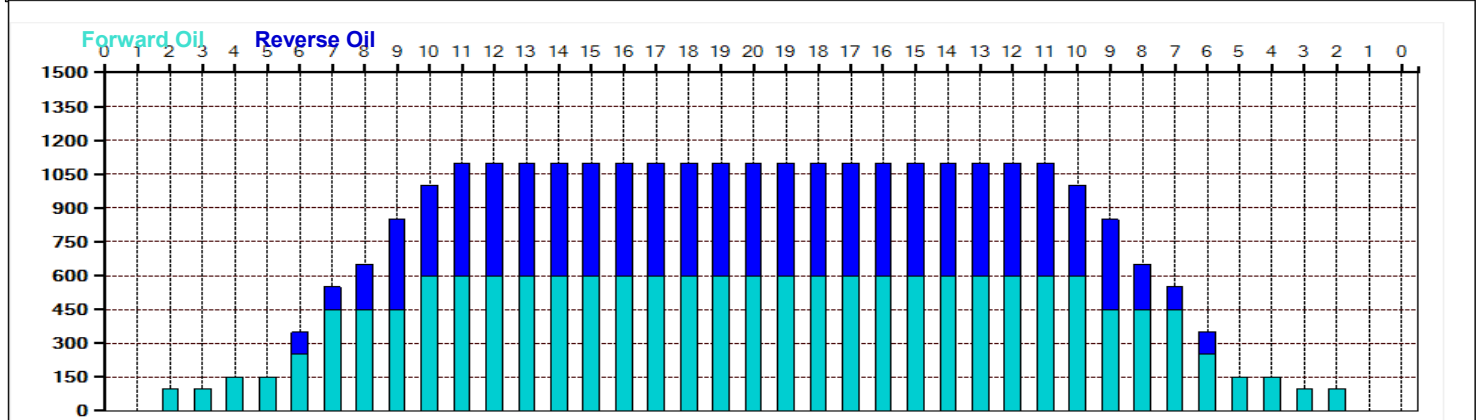
Reverse

Combined

Buff



Item	3L-7L:18L-18R	8L-12L:18L-18R	13L-17L:18L-18R	18L-18R:17R-13R	18L-18R:12R-8R	18L-18R:7R-3R
Description	Outside Track:Middle	Middle Track:Middle	Inside Track:Middle	Middle: Inside Track	Middle:Middle Track	Middle:Outside Track
Track Zone Ratio	4.23	1.17	1	1	1.17	4.23



# 2021 PBA ROTH 42



**Oil Pattern Distance:** 42 Feet  
**Forward Oil Total:** 13.8 mL  
**Forward Boards Crossed:** 276 Boards

**Reverse Brush Drop:** 38 Feet  
**Reverse Oil Total:** 12.5 mL  
**Reverse Boards Crossed:** 250 Boards

**Oil Per Board:** 50 uL  
**Volume Oil Total:** 26.3 mL  
**Total Boards Crossed:** 526 Boards

	Start	Stop	Loads	Speed	Crossed	Start	End	Feet	T.Oil
1	2L	2R	2	14	74	0.0	1.9	1.9	3700
2	7L	7R	2	18	54	1.9	7.0	5.1	2700
3	9L	9R	2	18	46	7.0	12.1	5.1	2300
4	11L	11R	3	18	57	12.1	19.7	7.6	2850
5	13L	13R	3	22	45	19.7	29.0	9.3	2250
6	2L	2R	0	22	0	29.0	38.0	9.0	0
7	2L	2R	0	30	0	38.0	42.0	4.0	0

Forward Reverse More

	Start	Stop	Loads	Speed	Crossed	Start	End	Feet	T.Oil
1	2L	2R	0	30	0	42.0	33.0	-9.0	0
2	12L	12R	2	18	34	33.0	27.9	-5.1	1700
3	11L	11R	5	14	95	27.9	18.0	-9.9	4750
4	10L	10R	4	14	84	18.0	10.1	-7.9	4200
5	2L	2R	1	14	37	10.1	8.2	-1.9	1850
6	2L	2R	0	14	0	8.2	0.0	-8.2	0

Forward Reverse More

Conditioner:  
Type In or Select One

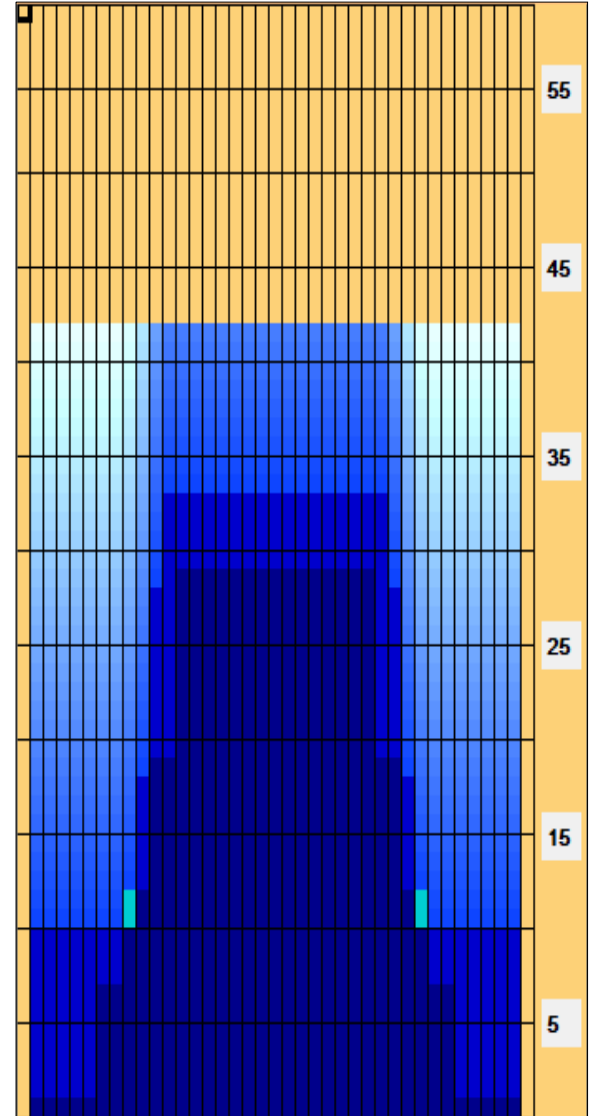
TransferType:  
Type In or Select One

Forward

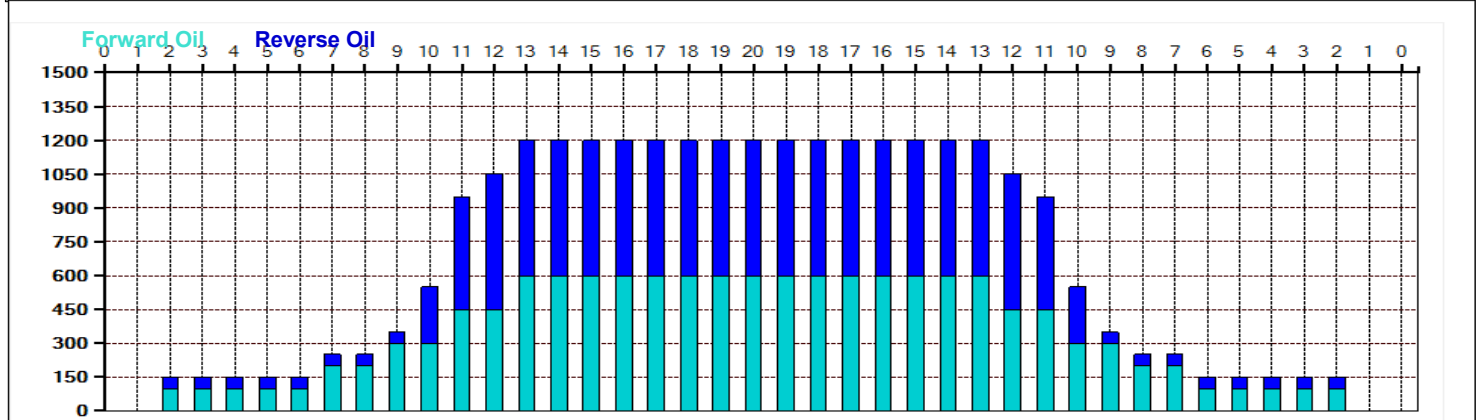
Reverse

Combined

Buff



Item	3L-7L:18L-18R	8L-12L:18L-18R	13L-17L:18L-18R	18L-18R:17R-13R	18L-18R:12R-8R	18L-18R:7R-3R
Description	Outside Track:Middle	Middle Track:Middle	Inside Track:Middle	Middle: Inside Track	Middle:Middle Track	Middle:Outside Track
Track Zone Ratio	7.06	1.9	1	1	1.9	7.06



# 2021 PBA DRAGON 45



Oil Pattern Distance: **45 Feet**  
 Forward Oil Total: **13.6 mL**  
 Forward Boards Crossed: **272 Boards**

Reverse Brush Drop: **41 Feet**  
 Reverse Oil Total: **12.65 mL**  
 Reverse Boards Crossed: **253 Boards**

Oil Per Board: **50 uL**  
 Volume Oil Total: **26.25 mL**  
 Total Boards Crossed: **525 Boards**

	Start	Stop	Loads	Speed	Crossed	Start	End	Feet	T.Oil
1	2L	2R	4	14	148	0.0	5.9	5.9	7400
2	9L	9R	1	14	23	5.9	7.8	1.9	1150
3	11L	11R	3	18	57	7.8	15.4	7.6	2850
4	15L	15R	4	18	44	15.4	25.6	10.2	2200
5	2L	2R	0	22	0	25.6	45.0	19.4	0

Conditioner:  
Type In or Select One

TransferType:  
Type In or Select One

Forward  
Reverse  
More

	Start	Stop	Loads	Speed	Crossed	Start	End	Feet	T.Oil
1	2L	2R	0	30	0	45.0	34.0	-11.0	0
2	16L	16R	2	22	18	34.0	27.8	-6.2	900
3	12L	12R	3	18	51	27.8	20.2	-7.6	2550
4	11L	10R	3	14	60	20.2	14.3	-5.9	3000
5	7L	7R	2	14	54	14.3	10.4	-3.9	2700
6	2L	4R	2	14	70	10.4	6.5	-3.9	3500
7	2L	2R	0	14	0	6.5	0.0	-6.5	0

Forward  
Reverse  
More

Conditioner:  
Type In or Select One

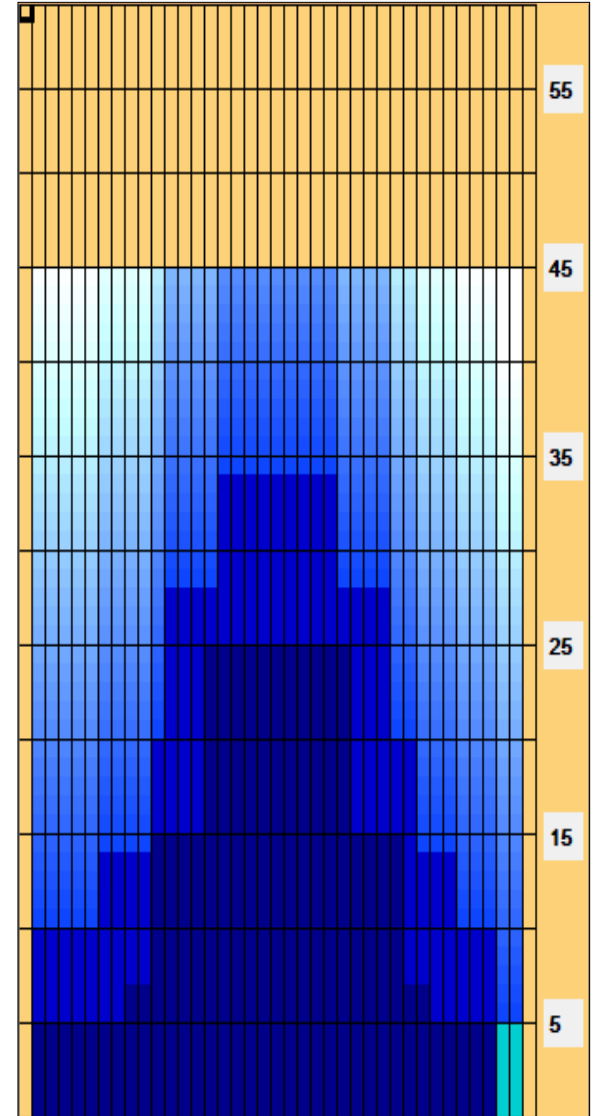
TransferType:  
Type In or Select One

Forward

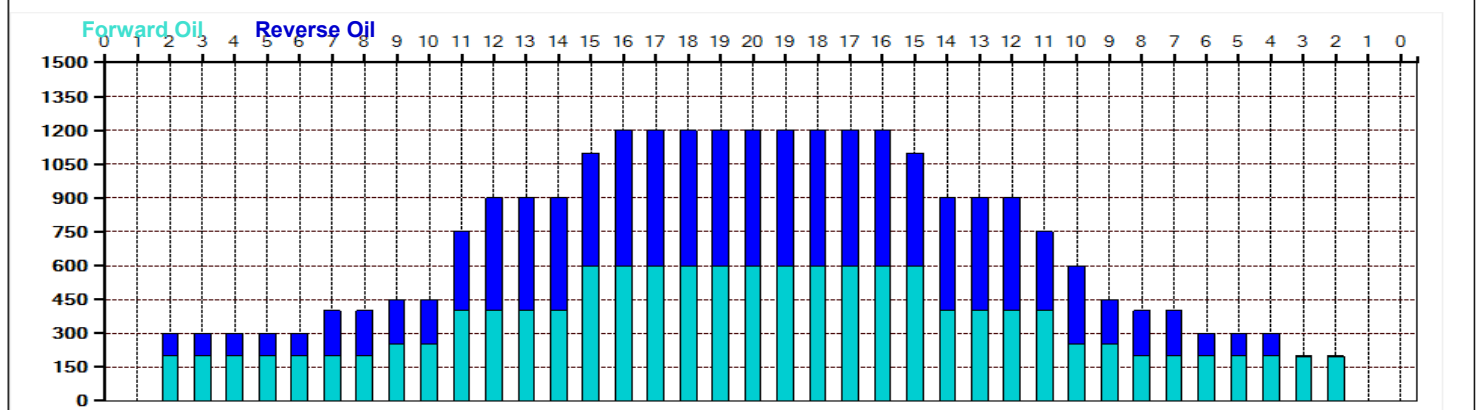
Reverse

Combined

Buff



Item	3L-7L:18L-18R	8L-12L:18L-18R	13L-17L:18L-18R	18L-18R:17R-13R	18L-18R:12R-8R	18L-18R:7R-3R
Description	Outside Track:Middle	Middle Track:Middle	Inside Track:Middle	Middle: Inside Track	Middle:Middle Track	Middle:Outside Track
Track Zone Ratio	3.75	2.03	1.13	1.13	1.94	4



# 2021 PBA AULBY 39



Oil Pattern Distance: **39 Feet**  
 Forward Oil Total: **15.9 mL**  
 Forward Boards Crossed: **318 Boards**

Reverse Brush Drop: **38 Feet**  
 Reverse Oil Total: **8.3 mL**  
 Reverse Boards Crossed: **166 Boards**

Oil Per Board: **50 uL**  
 Volume Oil Total: **24.2 mL**  
 Total Boards Crossed: **484 Boards**

Start	Stop	Loads	Speed	Crossed	Start	End	Feet	T.Oil
1	2L 2R	2	18	74	0.0	2.5	2.5	3700
2	8L 8R	4	18	100	2.5	12.7	10.2	5000
3	11L 10R	4	18	80	12.7	22.9	10.2	4000
4	13L 12R	4	18	64	22.9	33.1	10.2	3200
5	2L 2R	0	22	0	33.1	39.0	5.9	0

Start	Stop	Loads	Speed	Crossed	Start	End	Feet	T.Oil
1	2L 2R	0	30	0	39.0	25.0	-14.0	0
2	11L 11R	2	22	38	25.0	18.8	-6.2	1900
3	7L 9R	1	18	25	18.8	16.3	-2.5	1250
4	5L 7R	1	18	29	16.3	13.8	-2.5	1450
5	2L 2R	2	14	74	13.8	9.9	-3.9	3700
6	2L 2R	0	14	0	9.9	0.0	-9.9	0

Conditioner:  
Type In or Select One

TransferType:  
Type In or Select One

Forward



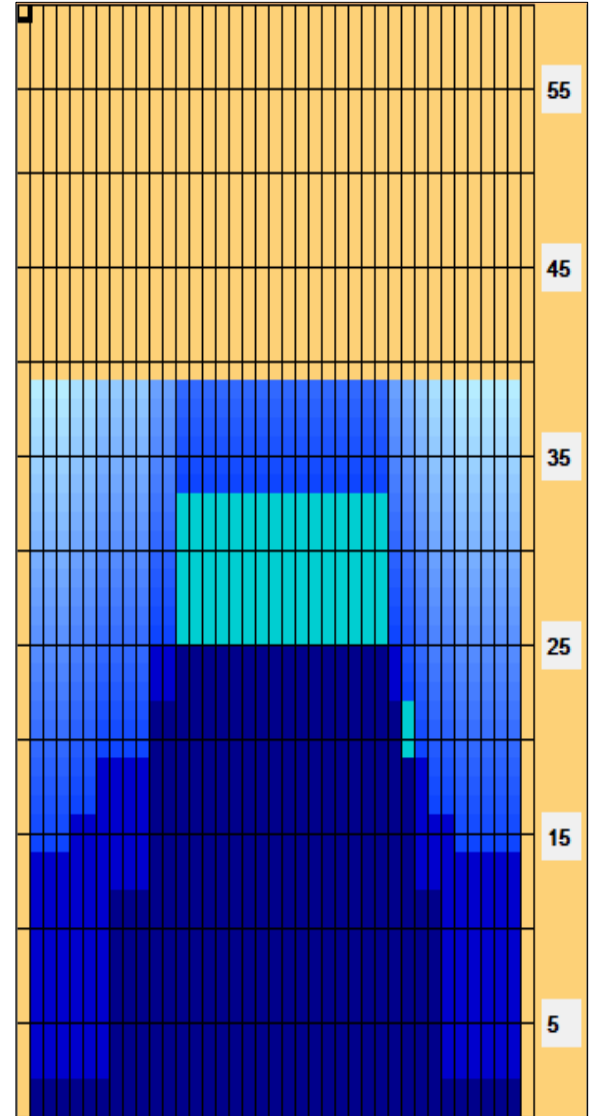
Reverse



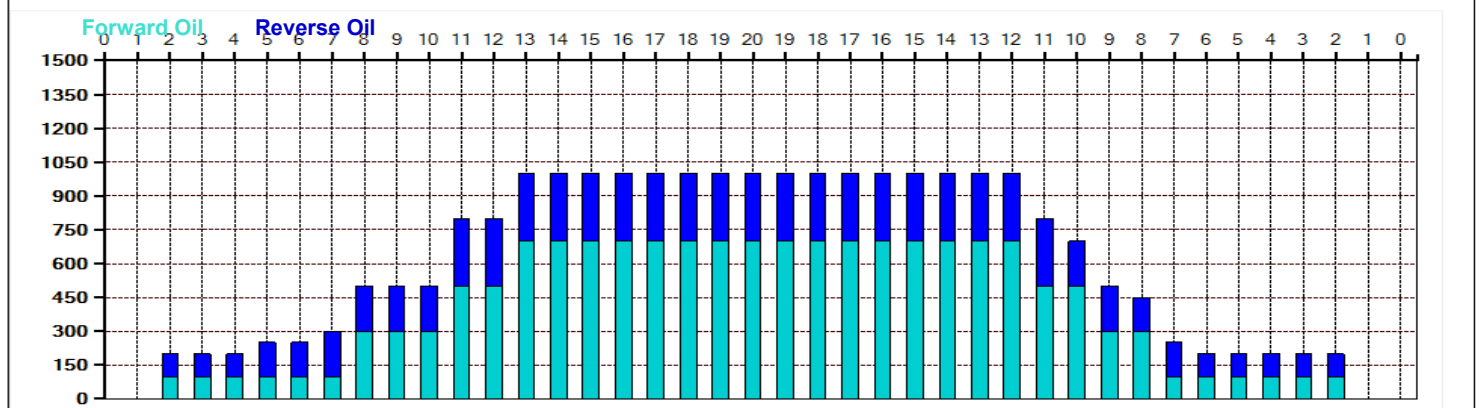
Combined



Buff



Item	3L-7L:18L-18R	8L-12L:18L-18R	13L-17L:18L-18R	18L-18R:17R-13R	18L-18R:12R-8R	18L-18R:7R-3R
Description	Outside Track:Middle	Middle Track:Middle	Inside Track:Middle	Middle: Inside Track	Middle:Middle Track	Middle:Outside Track
Track Zone Ratio	4.17	1.61	1	1	1.45	4.76



# 2021 PBA PETRAGLIA 46



Oil Pattern Distance: **46 Feet**  
 Forward Oil Total: **14.15 mL**  
 Forward Boards Crossed: **283 Boards**

Reverse Brush Drop: **38 Feet**  
 Reverse Oil Total: **9.1 mL**  
 Reverse Boards Crossed: **182 Boards**

Oil Per Board: **50 uL**  
 Volume Oil Total: **23.25 mL**  
 Total Boards Crossed: **465 Boards**

	Start	Stop	Loads	Speed	Crossed	Start	End	Feet	T.Oil
1	2L	2R	2	14	74	0.0	1.9	1.9	3700
2	7L	7R	2	18	54	1.9	7.0	5.1	2700
3	9L	9R	2	18	46	7.0	12.1	5.1	2300
4	11L	11R	3	18	57	12.1	19.7	7.6	2850
5	13L	13R	2	18	30	19.7	24.8	5.1	1500
6	15L	15R	2	22	22	24.8	31.0	6.2	1100
7	2L	2R	0	22	0	31.0	40.0	9.0	0
8	2L	2R	0	30	0	40.0	46.0	6.0	0

	Start	Stop	Loads	Speed	Crossed	Start	End	Feet	T.Oil
1	2L	2R	0	30	0	46.0	29.0	-17.0	0
2	14L	14R	2	18	26	29.0	23.9	-5.1	1300
3	14L	14R	2	14	26	23.9	20.0	-3.9	1300
4	10L	10R	4	14	84	20.0	12.1	-7.9	4200
5	9L	9R	2	14	46	12.1	8.2	-3.9	2300
6	2L	2R	0	14	0	8.2	0.0	-8.2	0

Conditioner:  
Type In or Select One

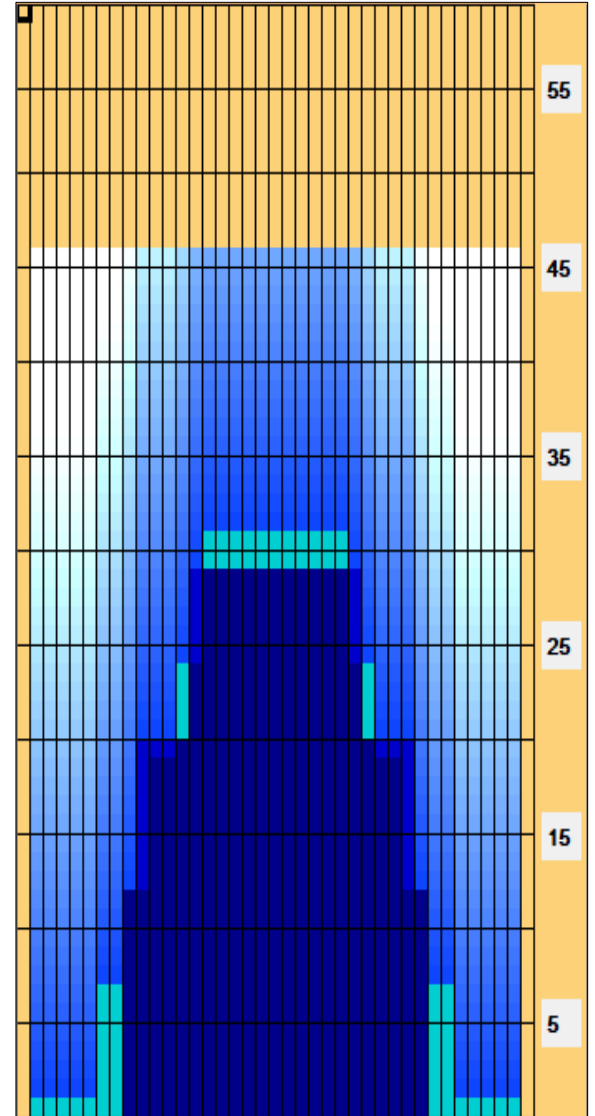
TransferType:  
Type In or Select One

Forward

Reverse

Combined

Buff



Item	3L-7L:18L-18R	8L-12L:18L-18R	13L-17L:18L-18R	18L-18R:17R-13R	18L-18R:12R-8R	18L-18R:7R-3R
Description	Outside Track:Middle	Middle Track:Middle	Inside Track:Middle	Middle: Inside Track	Middle:Middle Track	Middle:Outside Track
Track Zone Ratio	9.58	2.13	1.07	1.07	2.13	9.58

