

## **SUMMER ELIMINATOR PBA OIL PATTERNS**

**May 21<sup>st</sup>:            41' McEwan**

**May 28<sup>th</sup>:            37' Webb**

**June 4<sup>th</sup>:             40' Johnson**

**June 11<sup>th</sup>:           43' Roth**

**June 18<sup>th</sup>:           45' Weber**

**June 25<sup>th</sup>:           42' Salvino**

**July 2<sup>nd</sup>:              39' Aulby**

**July 9<sup>th</sup>:             44' Tackett**

**July 16<sup>th</sup>:           36' O'Neill**

**July 23<sup>rd</sup>:           43' Anthony**

**July 30<sup>th</sup>:           Finals  
                         40' Monacelli**

**USBC CERTIFIED #10676, USBC RULES WILL APPLY.**

**OPEN TO ALL USBC SANCTIONED ADULT BOWLERS.**

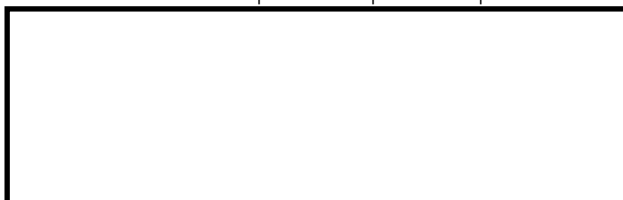
**ALL DECISIONS OF THE TOURNAMENT MANAGER ARE FINAL.**

Oil Pattern Distance	41	Reverse Brush Drop	35	Oil Per Board	50 ul
Forward Oil Total	14.4 mL	Reverse Oil Total	12.05 mL	Volume Oil Total	26.45 mL
Tank Configuration	A Only	Tank A Conditioner		Tank B Conditioner	

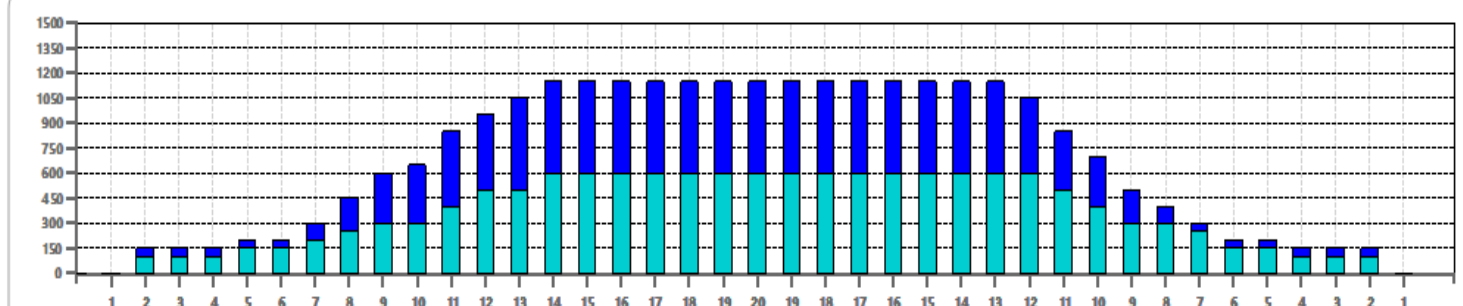
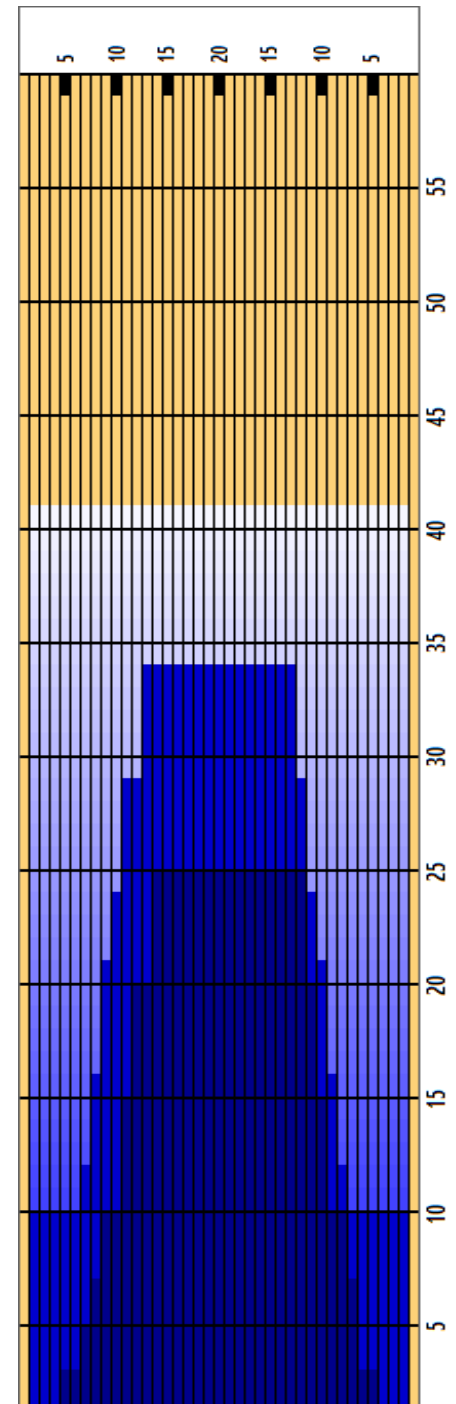
	START	STOP	LOADS	SPEED	BUFFER	TANK	CROSSED	START	END	FEET	T.OIL
1	2L	2R	2	10	3	A	74	0.0	1.4	1.4	3700
2	5L	5R	1	14	3	A	31	1.4	3.3	1.9	1550
3	7L	7R	1	14	3	A	27	3.3	5.2	1.9	1350
4	8L	7R	1	18	3	A	26	5.2	7.7	2.5	1300
5	9L	8R	1	18	3	A	24	7.7	10.2	2.5	1200
6	11L	10R	2	18	3	A	40	10.2	15.3	5.1	2000
7	12L	11R	2	18	3	A	36	15.3	20.4	5.1	1800
8	14L	12R	2	18	3	A	30	20.4	25.5	5.1	1500
9	2L	2R	0	18	3	A	0	25.5	32.0	6.5	0
10	2L	2R	0	22	3	A	0	32.0	36.0	4.0	0
11	2L	2R	0	30	3	A	0	36.0	41.0	5.0	0

	START	STOP	LOADS	SPEED	BUFFER	TANK	CROSSED	START	END	FEET	T.OIL
1	2L	2R	0	30	3	A	0	41.0	34.0	-7.0	0
2	13L	13R	2	18	3	A	30	34.0	28.9	-5.1	1500
3	11L	12R	2	18	3	A	36	28.9	23.8	-5.1	1800
4	10L	11R	1	18	3	A	20	23.8	21.3	-2.5	1000
5	9L	10R	2	18	3	A	44	21.3	16.2	-5.1	2200
6	8L	9R	2	14	3	A	48	16.2	12.3	-3.9	2400
7	7L	8R	1	14	3	A	26	12.3	10.4	-1.9	1300
8	2L	2R	1	14	3	A	37	10.4	8.5	-1.9	1850
9	2L	2R	0	14	3	A	0	8.5	0.0	-8.5	0

Cleaner Ratio Main Mix NA Forward  
 Cleaner Ratio Back End Mix NA Reverse  
 Cleaner Ratio Back End Distance NA Combined  
 Buffer RPM: 4 = 700 | 3 = 500 | 2 = 200 | 1 = 100



Item	3L-7L:18L-18R	8L-12L:18L-18R	13L-17L:18L-18R	18L-18R:17R-13R	18L-18R:12R-8R	18L-18R:7R-3R
Description	Outside:Middle	Middle:Middle	Inside:Middle	Middle: Inside	Middle:Middle	Middle:Outside
Track Zone Ratio	5.75	1.64	1.02	1	1.64	5.75





# PBA WEBB 37 (2025)

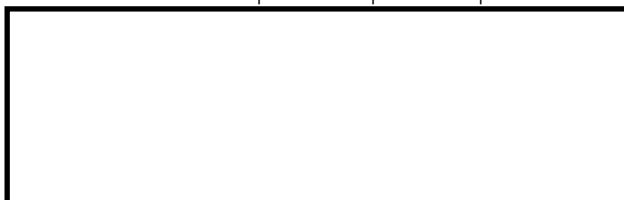


Oil Pattern Distance	37	Reverse Brush Drop	30	Oil Per Board	50 ul
Forward Oil Total	14.05 mL	Reverse Oil Total	13.65 mL	Volume Oil Total	27.7 mL
Tank Configuration	A Only	Tank A Conditioner	KEGEL	Tank B Conditioner	KEGEL

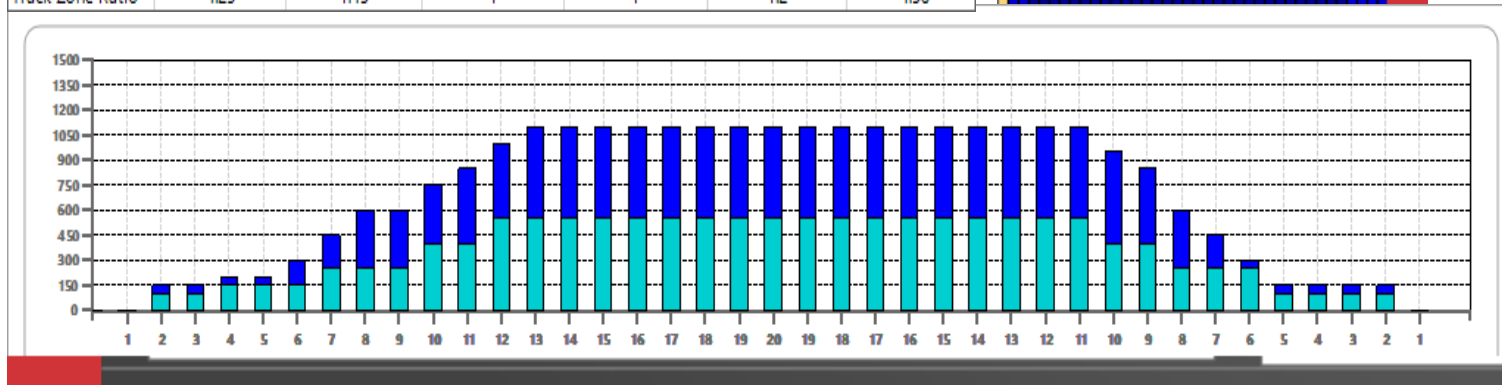
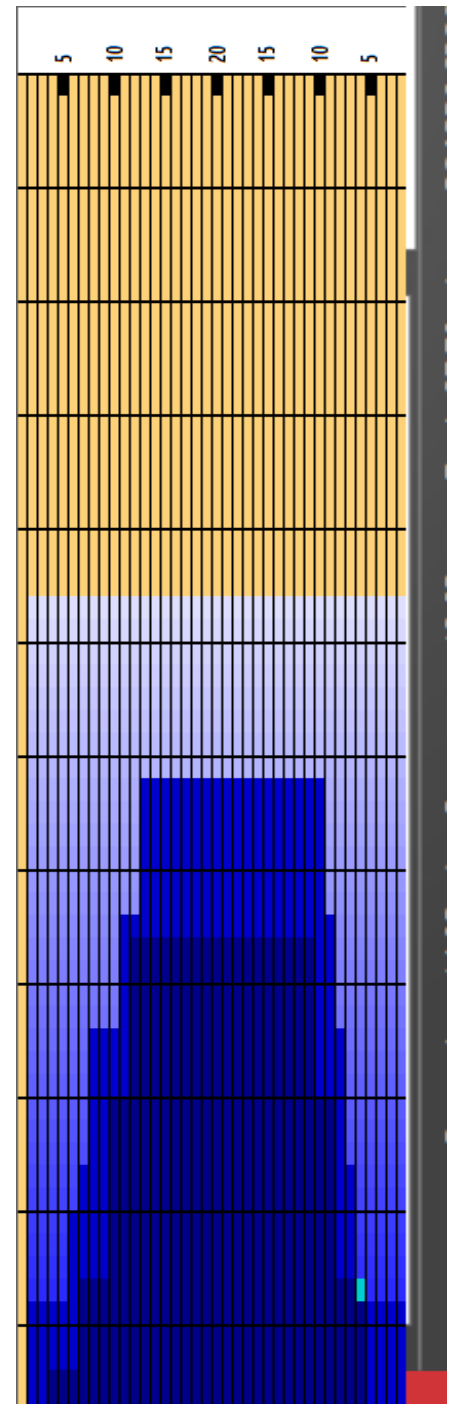
	START	STOP	LOADS	SPEED	BUFFER	CROSSED	START	END	FEET	T.OIL
1	2L	2R	2	14	3	74	0.0	1.9	1.9	3700
2	4L	6R	1	14	3	31	1.9	3.8	1.9	1550
3	7L	6R	2	14	3	56	3.8	7.7	3.9	2800
4	10L	9R	3	18	3	66	7.7	15.3	7.6	3300
5	12L	11R	3	18	3	54	15.3	22.9	7.6	2700
6	2L	2R	0	18	3	0	22.9	28.0	5.1	0
7	2L	2R	0	22	3	0	28.0	37.0	9.0	0

	START	STOP	LOADS	SPEED	BUFFER	CROSSED	START	END	FEET	T.OIL
1	2L	2R	0	22	3	0	37.0	29.0	-8.0	0
2	13L	10R	2	22	3	36	29.0	22.8	-6.2	1800
3	11L	9R	2	18	3	42	22.8	17.7	-5.1	2100
4	8L	8R	3	14	3	75	17.7	11.8	-5.9	3750
5	7L	7R	1	14	3	27	11.8	9.9	-1.9	1350
6	6L	7R	2	14	3	56	9.9	6.0	-3.9	2800
7	2L	2R	1	14	3	37	6.0	4.1	-1.9	1850
8	2L	2R	0	14	3	0	4.1	0.0	-4.1	0

Cleaner Ratio Main Mix                      NA              Forward  
Cleaner Ratio Back End Mix                  NA              Reverse  
Cleaner Ratio Back End Distance            NA              Combined  
Buffer RPM: 4 = 700 | 3 = 500 | 2 = 200 | 1 = 100



Item	3L-7L:18L-18R	8L-12L:18L-18R	13L-17L:18L-18R	18L-18R:17R-13R	18L-18R:12R-8R	18L-18R:7R-3R
Description	Outside:Middle	Middle:Middle	Inside:Middle	Middle: Inside	Middle:Middle	Middle:Outside
Track Zone Ratio	4.23	1.45	1	1	1.2	4.58





# 2025 PBA JOHNSON 40



Oil Pattern Distance	40	Reverse Brush Drop	34	Oil Per Board	50 uL
Forward Oil Total	20.6 mL	Reverse Oil Total	15.5 mL	Volume Oil Total	36.1 mL
Tank Configuration	A Only	Tank A Conditioner		Tank B Conditioner	

	START	STOP	LOADS	SPEED	BUFFER	TANK	CROSSED	START	END	FEET	T.OIL
1	2L	2R	4	14	3	A	148	0.0	5.9	5.9	7400
2	2L	5R	1	14	3	A	34	5.9	7.8	1.9	1700
3	5L	5R	2	14	3	A	62	7.8	11.7	3.9	3100
4	5L	8R	1	18	3	A	28	11.7	14.2	2.5	1400
5	8L	8R	2	18	3	A	50	14.2	19.3	5.1	2500
6	11L	10R	3	18	3	A	60	19.3	26.9	7.6	3000
7	14L	12R	2	18	3	A	30	26.9	32.0	5.1	1500
8	2L	2R	0	18	3	A	0	32.0	36.0	4.0	0
9	2L	2R	0	22	3	A	0	36.0	40.0	4.0	0

	START	STOP	LOADS	SPEED	BUFFER	TANK	CROSSED	START	END	FEET	T.OIL
1	2L	2R	0	22	3	A	0	40.0	33.0	-7.0	0
2	13L	11R	1	22	3	A	17	33.0	29.9	-3.1	850
3	12L	11R	1	18	3	A	18	29.9	27.4	-2.5	900
4	10L	9R	1	18	3	A	22	27.4	24.9	-2.5	1100
5	9L	9R	1	18	3	A	23	24.9	22.4	-2.5	1150
6	7L	7R	1	18	3	A	27	22.4	19.9	-2.5	1350
7	6L	7R	1	18	3	A	28	19.9	17.4	-2.5	1400
8	2L	2R	1	18	3	A	37	17.4	14.9	-2.5	1850
9	4L	4R	2	14	3	A	66	14.9	11.0	-3.9	3300
10	3L	3R	1	14	3	A	35	11.0	9.1	-1.9	1750
11	2L	2R	1	14	3	A	37	9.1	7.2	-1.9	1850
12	2L	2R	0	14	3	A	0	7.2	0.0	-7.2	0

Cleaner Ratio Main Mix                      NA              Forward

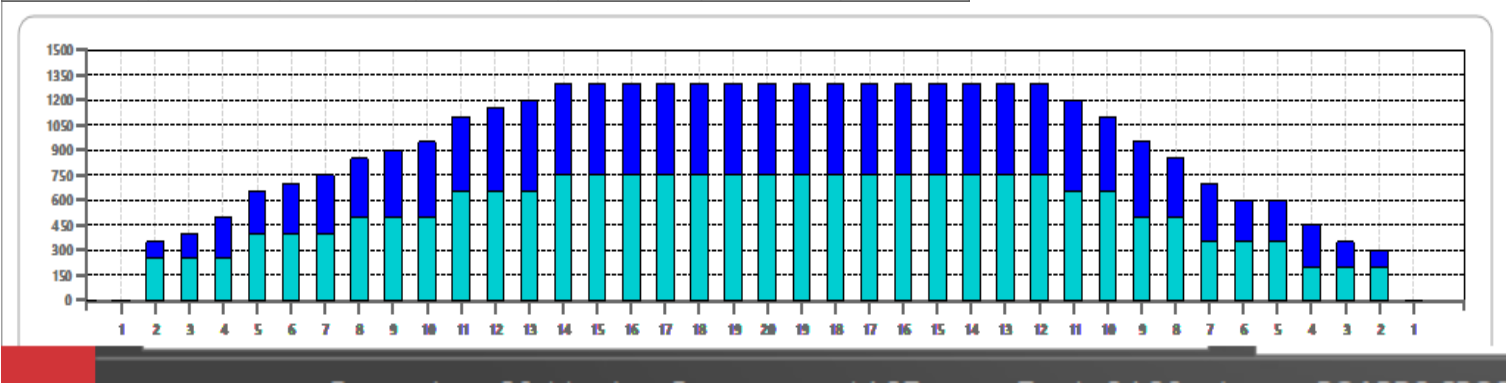
Cleaner Ratio Back End Mix                      NA              Reverse

Cleaner Ratio Back End Distance                      NA              Combined

Buffer RPM: 4 = 700 | 3 = 500 | 2 = 200 | 1 = 100



Item	3L-7L:18L-18R	8L-12L:18L-18R	13L-17L:18L-18R	18L-18R:17R-13R	18L-18R:12R-8R	18L-18R:7R-3R
Description	Outside:Middle	Middle:Middle	Inside:Middle	Middle: Inside	Middle:Middle	Middle:Outside
Track Zone Ratio	2.17	1.31	1.02	1	1.2	2.41

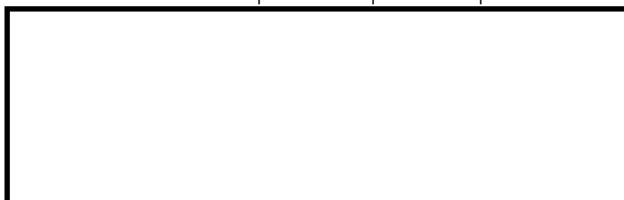


Oil Pattern Distance	43	Reverse Brush Drop	37	Oil Per Board	50 ul
Forward Oil Total	17.6 mL	Reverse Oil Total	15.7 mL	Volume Oil Total	33.3 mL
Tank Configuration	A Only	Tank A Conditioner		Tank B Conditioner	

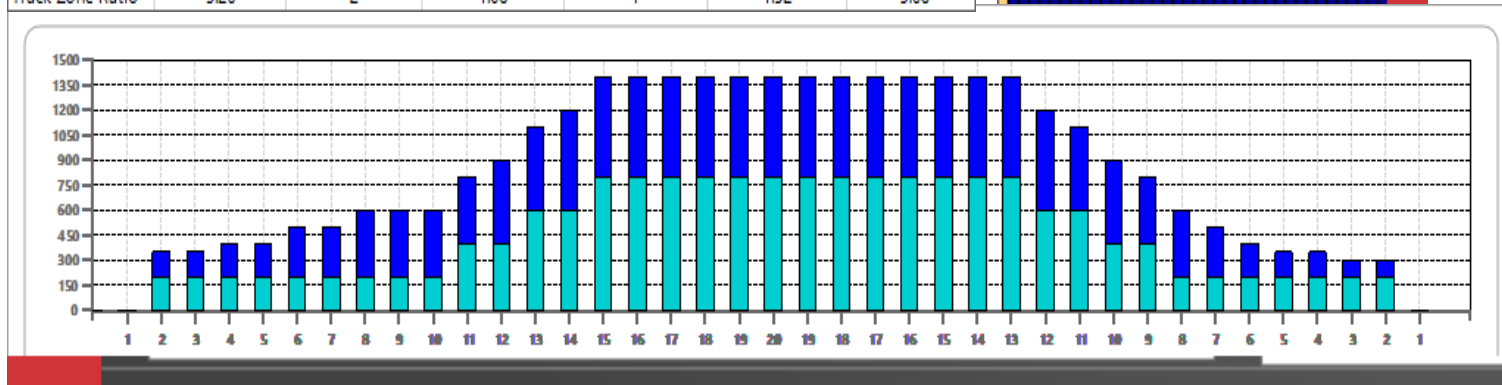
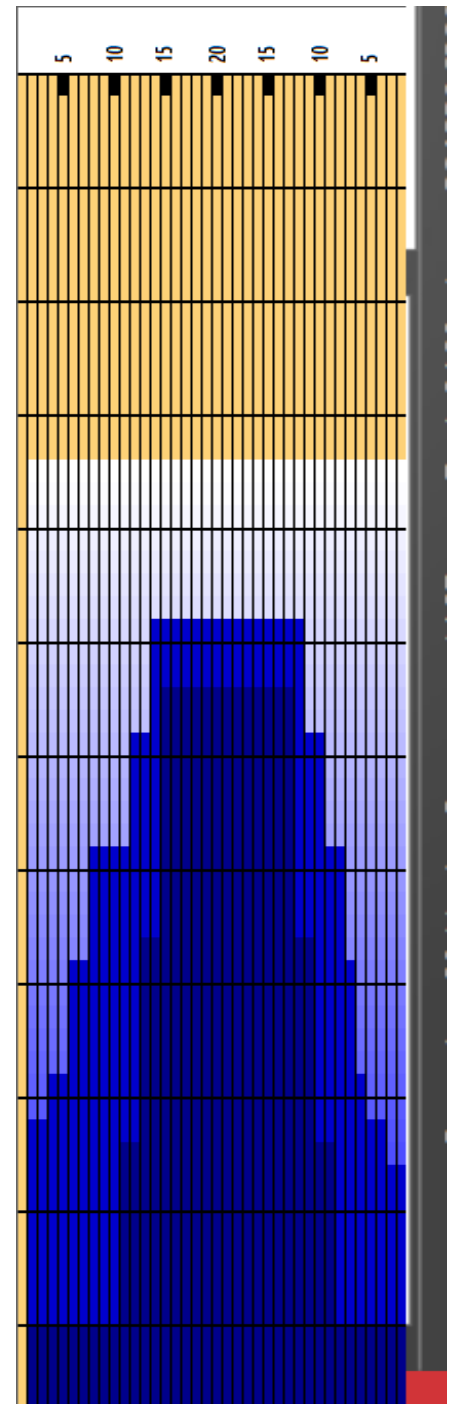
	START	STOP	LOADS	SPEED	BUFFER	TANK	CROSSED	START	END	FEET	T.OIL
1	2L	2R	4	14	3	A	148	0.0	5.9	5.9	7400
2	11L	9R	4	14	3	A	84	5.9	13.8	7.9	4200
3	13L	11R	2	14	3	A	34	13.8	17.7	3.9	1700
4	13L	11R	2	18	3	A	34	17.7	22.8	5.1	1700
5	15L	13R	4	18	3	A	52	22.8	33.0	10.2	2600
6	2L	2R	0	22	3	A	0	33.0	38.0	5.0	0
7	2L	2R	0	26	3	A	0	38.0	43.0	5.0	0

	START	STOP	LOADS	SPEED	BUFFER	TANK	CROSSED	START	END	FEET	T.OIL
1	2L	2R	0	30	3	A	0	43.0	36.0	-7.0	0
2	14L	12R	2	18	3	A	30	36.0	30.9	-5.1	1500
3	12L	10R	2	18	3	A	38	30.9	25.8	-5.1	1900
4	8L	8R	2	18	3	A	50	25.8	20.7	-5.1	2500
5	6L	7R	2	18	3	A	56	20.7	15.6	-5.1	2800
6	4L	6R	1	14	3	A	31	15.6	13.7	-1.9	1550
7	2L	4R	1	14	3	A	35	13.7	11.8	-1.9	1750
8	2L	2R	2	14	3	A	74	11.8	7.9	-3.9	3700
9	2L	2R	0	14	3	A	0	7.9	0.0	-7.9	0

Cleaner Ratio Main Mix NA Forward  
 Cleaner Ratio Back End Mix NA Reverse  
 Cleaner Ratio Back End Distance NA Combined  
 Buffer RPM: 4 = 700 | 3 = 500 | 2 = 200 | 1 = 100



Item	3L-7L:18L-18R	8L-12L:18L-18R	13L-17L:18L-18R	18L-18R:17R-13R	18L-18R:12R-8R	18L-18R:7R-3R
Description	Outside:Middle	Middle:Middle	Inside:Middle	Middle: Inside	Middle:Middle	Middle:Outside
Track Zone Ratio	3.26	2	1.08	1	1.52	3.68

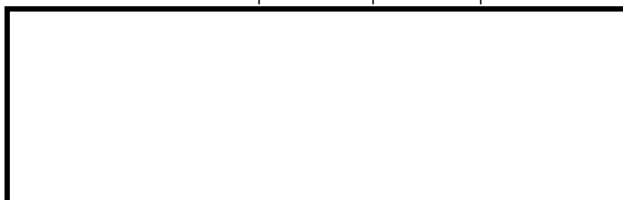


Oil Pattern Distance	45	Reverse Brush Drop	39	Oil Per Board	Multi ul
Forward Oil Total	17.44 mL	Reverse Oil Total	17.135 mL	Volume Oil Total	34.575 mL
Tank Configuration	A Only	Tank A Conditioner	KEGEL	Tank B Conditioner	KEGEL

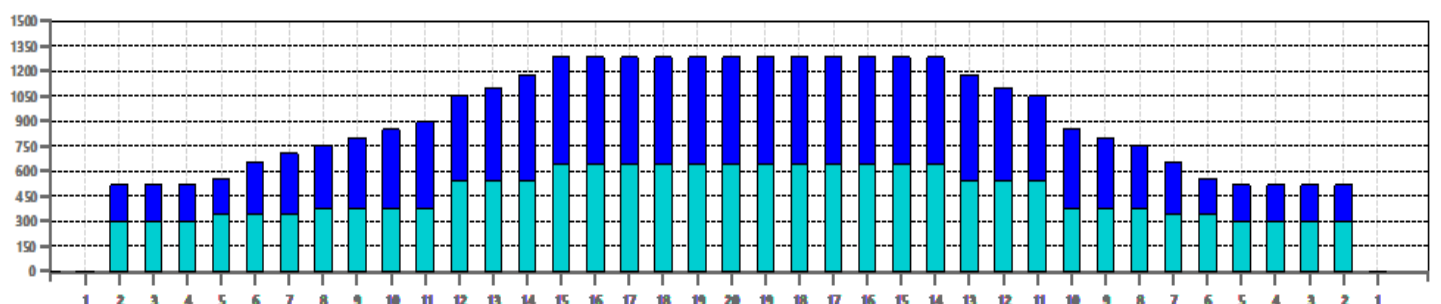
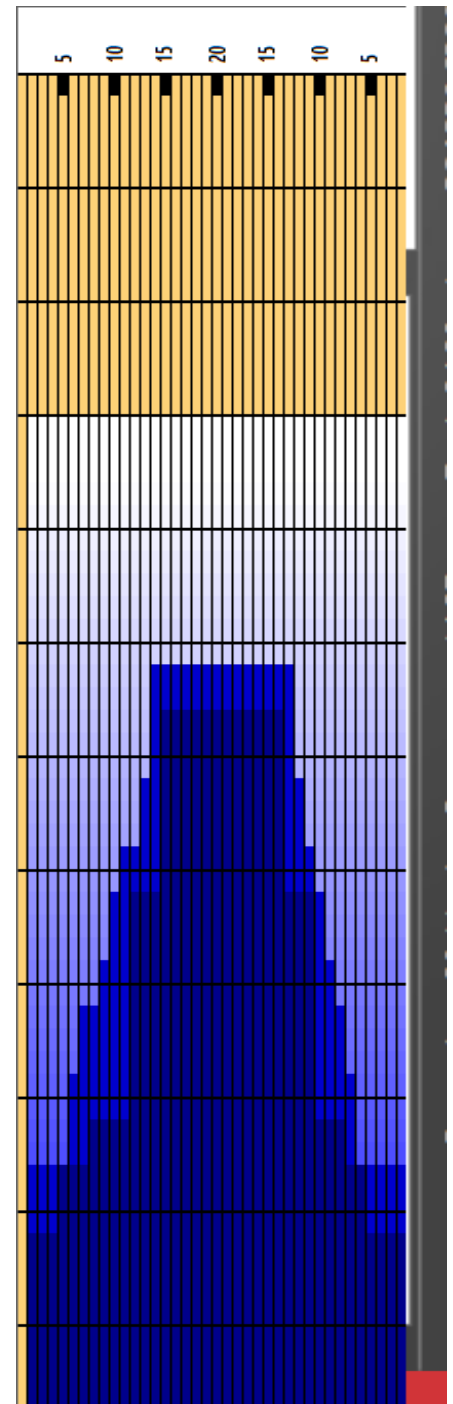
	START	STOP	LOADS	MICS	SPEED	BUFFER	TANK	CROSSED	START	END	FEET	T.OIL
1	2L	2R	2	60	14	3	A	74	0.0	1.9	1.9	4440
2	2L	2R	2	50	14	3	A	74	1.9	5.8	3.9	3700
3	2L	2R	2	40	14	3	A	74	5.8	9.7	3.9	2960
4	5L	6R	1	40	18	3	A	30	9.7	12.2	2.5	1200
5	8L	8R	1	40	18	3	A	25	12.2	14.7	2.5	1000
6	12L	11R	4	40	18	3	A	72	14.7	24.9	10.2	2880
7	15L	14R	3	35	18	3	A	36	24.9	32.5	7.6	1260
8	2L	2R	0	35	22	3	A	0	32.5	39.0	6.5	0
9	2L	2R	0	35	22	2	A	0	39.0	45.0	6.0	0

	START	STOP	LOADS	MICS	SPEED	BUFFER	TANK	CROSSED	START	END	FEET	T.OIL
1	2L	2R	0	40	30	3	A	0	45.0	34.0	-11.0	0
2	14L	13R	2	40	18	3	A	28	34.0	28.9	-5.1	1120
3	13L	12R	1	45	18	3	A	16	28.9	26.4	-2.5	720
4	11L	11R	1	45	18	3	A	19	26.4	23.9	-2.5	855
5	10L	10R	1	50	18	3	A	21	23.9	21.4	-2.5	1050
6	9L	9R	1	50	18	3	A	23	21.4	18.9	-2.5	1150
7	7L	8R	1	50	18	3	A	26	18.9	16.4	-2.5	1300
8	6L	7R	2	50	14	3	A	56	16.4	12.5	-3.9	2800
9	2L	2R	4	55	14	4	A	148	12.5	4.6	-7.9	8140
10	2L	2R	0	50	14	4	A	0	4.6	0.0	-4.6	0

Cleaner Ratio Main Mix NA Forward  
 Cleaner Ratio Back End Mix NA Reverse  
 Cleaner Ratio Back End Distance NA Combined  
 Buffer RPM: 4 = 700 | 3 = 500 | 2 = 200 | 1 = 100



Item	3L-7L:18L-18R	8L-12L:18L-18R	13L-17L:18L-18R	18L-18R:17R-13R	18L-18R:12R-8R	18L-18R:7R-3R
Description	Outside:Middle	Middle:Middle	Inside:Middle	Middle: Inside	Middle:Middle	Middle:Outside
Track Zone Ratio	2.16	1.48	1.05	1.02	1.41	2.31





# PBA SALVINO 42 (2025)

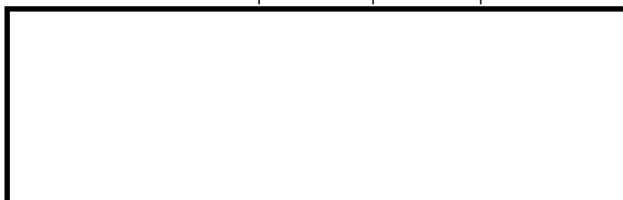


Oil Pattern Distance	42	Reverse Brush Drop	37	Oil Per Board	50 ul
Forward Oil Total	15.8 mL	Reverse Oil Total	17.65 mL	Volume Oil Total	33.45 mL
Tank Configuration	A Only	Tank A Conditioner	Kegel	Tank B Conditioner	Kegel

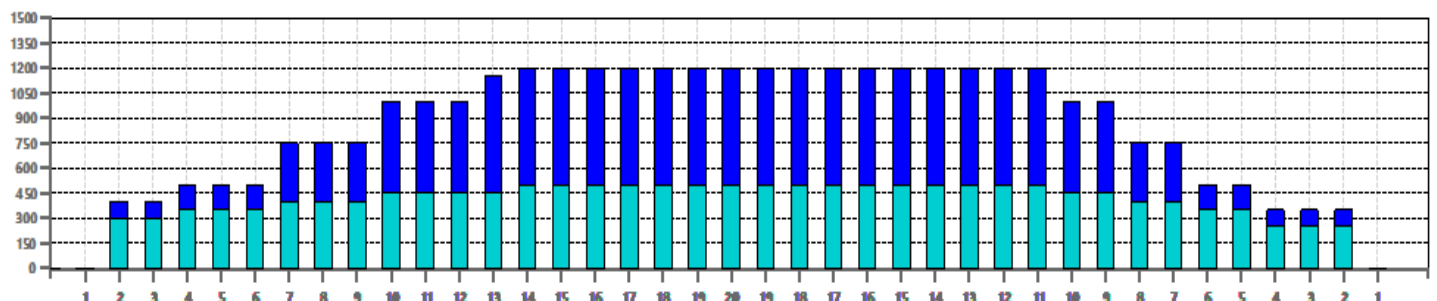
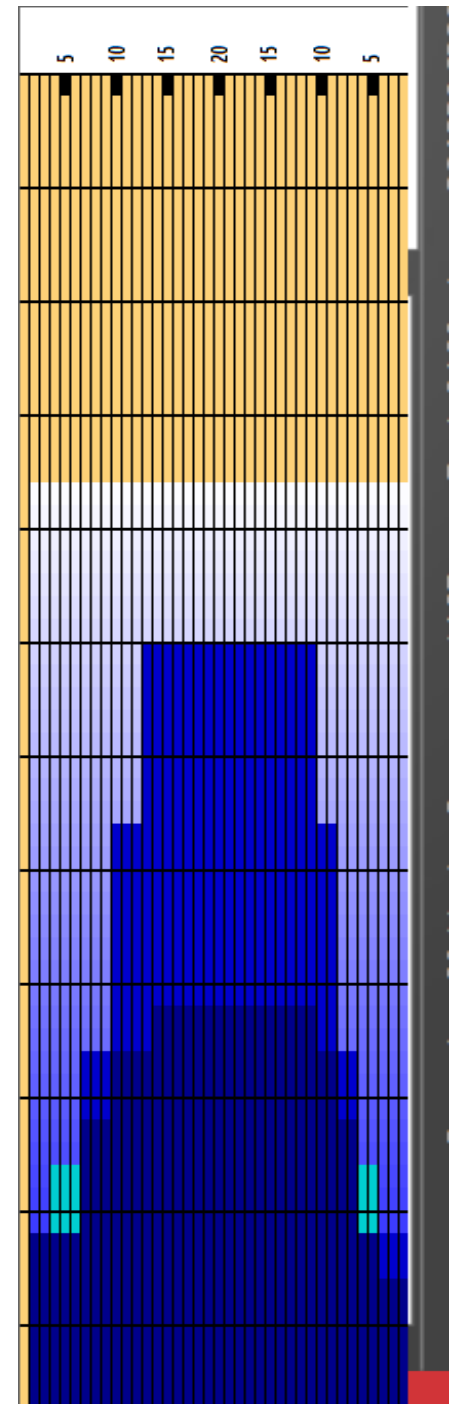
	START	STOP	LOADS	SPEED	BUFFER	TANK	CROSSED	START	END	FEET	T.OIL
1	2L	2R	5	14	3	A	185	0.0	7.9	7.9	9250
2	2L	5R	1	14	3	A	34	7.9	9.8	1.9	1700
3	4L	5R	1	18	3	A	32	9.8	12.3	2.5	1600
4	7L	7R	1	18	3	A	27	12.3	14.8	2.5	1350
5	10L	9R	1	18	3	A	22	14.8	17.3	2.5	1100
6	14L	11R	1	18	3	A	16	17.3	19.8	2.5	800
7	2L	2R	0	18	3	A	0	19.8	26.0	6.2	0
8	2L	2R	0	22	3	A	0	26.0	32.0	6.0	0
9	2L	2R	0	26	3	A	0	32.0	42.0	10.0	0

	START	STOP	LOADS	SPEED	BUFFER	TANK	CROSSED	START	END	FEET	T.OIL
1	2L	2R	0	30	3	A	0	42.0	35.0	-7.0	0
2	13L	11R	3	18	3	A	51	35.0	27.4	-7.6	2550
3	10L	9R	4	18	3	A	88	27.4	17.2	-10.2	4400
4	7L	7R	4	14	3	A	108	17.2	9.3	-7.9	5400
5	2L	2R	1	14	4	A	37	9.3	7.4	-1.9	1850
6	4L	5R	1	10	4	A	32	7.4	6.0	-1.4	1600
7	2L	2R	1	10	4	A	37	6.0	4.6	-1.4	1850
8	2L	2R	0	10	4	A	0	4.6	0.0	-4.6	0

Cleaner Ratio Main Mix NA Forward  
Cleaner Ratio Back End Mix NA Reverse  
Cleaner Ratio Back End Distance NA Combined  
Buffer RPM: 4 = 700 | 3 = 500 | 2 = 200 | 1 = 100



Item	3L-7L:18L-18R	8L-12L:18L-18R	13L-17L:18L-18R	18L-18R:17R-13R	18L-18R:12R-8R	18L-18R:7R-3R
Description	Outside:Middle	Middle:Middle	Inside:Middle	Middle: Inside	Middle:Middle	Middle:Outside
Track Zone Ratio	2.26	1.33	1.01	1	1.17	2.45





# PBA AULBY 39 (2025)

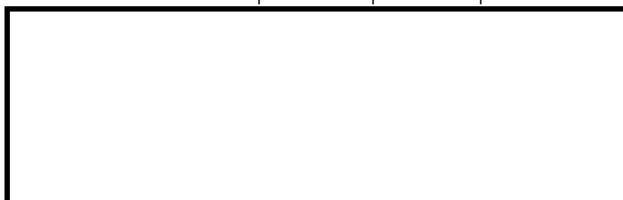


Oil Pattern Distance	39	Reverse Brush Drop	35	Oil Per Board	Multi ul
Forward Oil Total	14.39 mL	Reverse Oil Total	16.6 mL	Volume Oil Total	30.99 mL
Tank Configuration	A Only	Tank A Conditioner	KEGEL	Tank B Conditioner	KEGEL

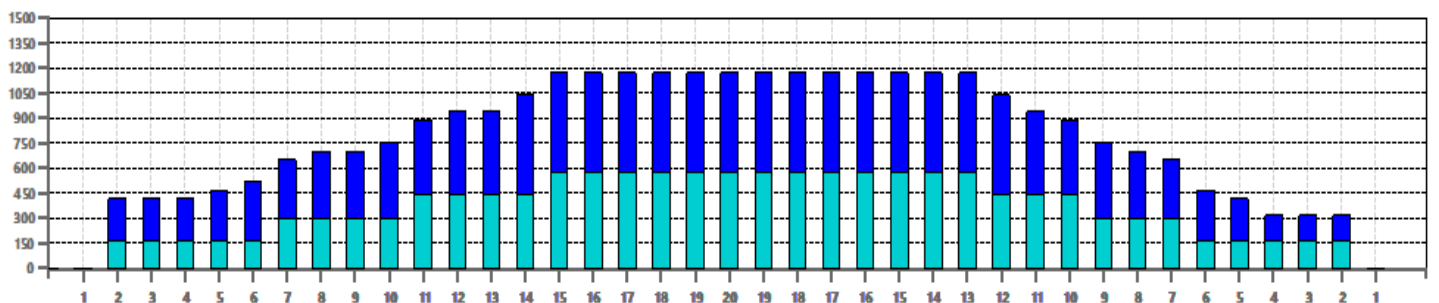
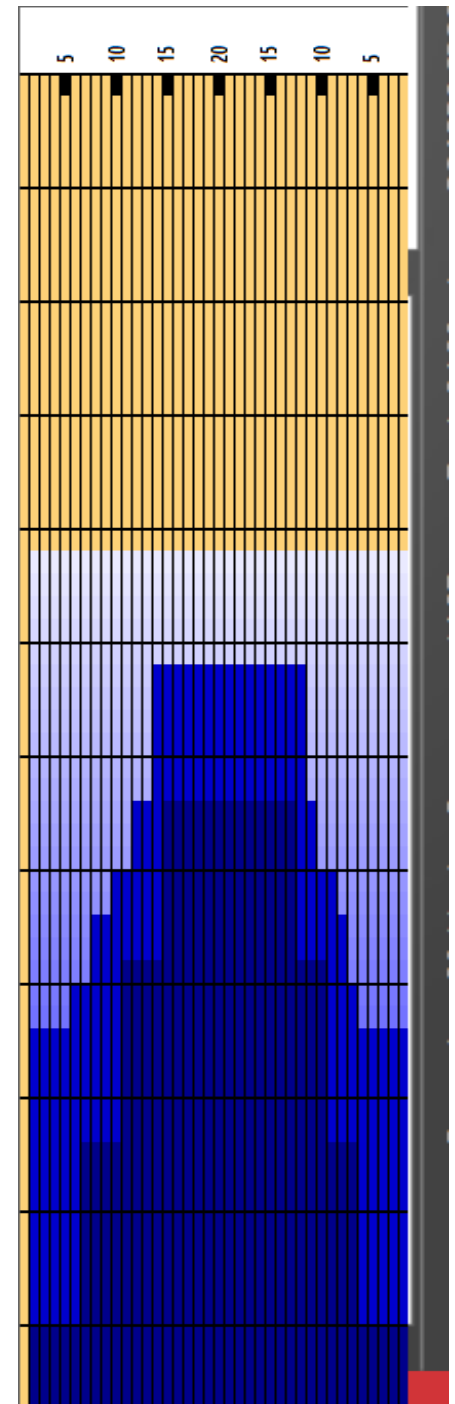
	START	STOP	LOADS	MICS	SPEED	BUFFER	TANK	CROSSED	START	END	FEET	T.OIL
1	2L	2R	2	40	14	3	A	74	0.0	1.9	1.9	2960
2	2L	2R	2	45	14	3	A	74	1.9	5.8	3.9	3330
3	7L	7R	3	45	18	3	A	81	5.8	13.4	7.6	3645
4	11L	10R	3	45	18	3	A	60	13.4	21.0	7.6	2700
5	15L	13R	3	45	18	3	A	39	21.0	28.6	7.6	1755
6	2L	2R	0	45	18	3	A	0	28.6	33.0	4.4	0
7	2L	2R	0	45	22	3	A	0	33.0	39.0	6.0	0

	START	STOP	LOADS	MICS	SPEED	BUFFER	TANK	CROSSED	START	END	FEET	T.OIL
1	2L	2R	0	50	22	3	A	0	39.0	34.0	-5.0	0
2	14L	12R	2	50	22	3	A	30	34.0	27.8	-6.2	1500
3	12L	11R	1	50	18	3	A	18	27.8	25.3	-2.5	900
4	10L	9R	1	50	18	3	A	22	25.3	22.8	-2.5	1100
5	8L	8R	1	50	18	3	A	25	22.8	20.3	-2.5	1250
6	6L	7R	1	50	18	3	A	28	20.3	17.8	-2.5	1400
7	2L	2R	1	50	14	3	A	37	17.8	15.9	-1.9	1850
8	5L	6R	1	50	14	3	A	30	15.9	14.0	-1.9	1500
9	2L	5R	2	50	14	4	A	68	14.0	10.1	-3.9	3400
10	2L	2R	2	50	14	4	A	74	10.1	6.2	-3.9	3700
11	2L	2R	0	55	14	4	A	0	6.2	0.0	-6.2	0

Cleaner Ratio Main Mix NA Forward  
Cleaner Ratio Back End Mix NA Reverse  
Cleaner Ratio Back End Distance NA Combined  
Buffer RPM: 4 = 700 | 3 = 500 | 2 = 200 | 1 = 100



Item	3L-7L:18L-18R	8L-12L:18L-18R	13L-17L:18L-18R	18L-18R:17R-13R	18L-18R:12R-8R	18L-18R:7R-3R
Description	Outside:Middle	Middle:Middle	Inside:Middle	Middle: Inside	Middle:Middle	Middle:Outside
Track Zone Ratio	2.36	1.47	1.07	1	1.36	2.69





Oil Pattern Distance	44	Reverse Brush Drop	36	Oil Per Board	50 ul
Forward Oil Total	15.85 mL	Reverse Oil Total	10.25 mL	Volume Oil Total	26.1 mL
Tank Configuration	A Only	Tank A Conditioner		Tank B Conditioner	

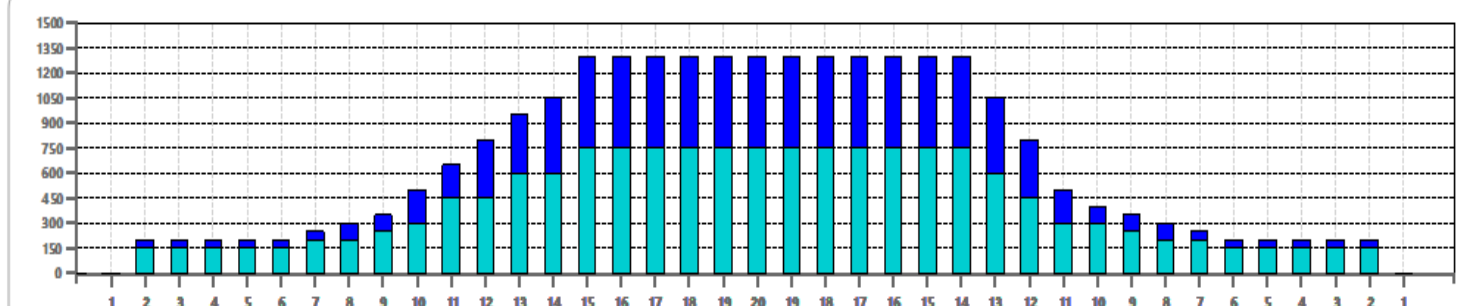
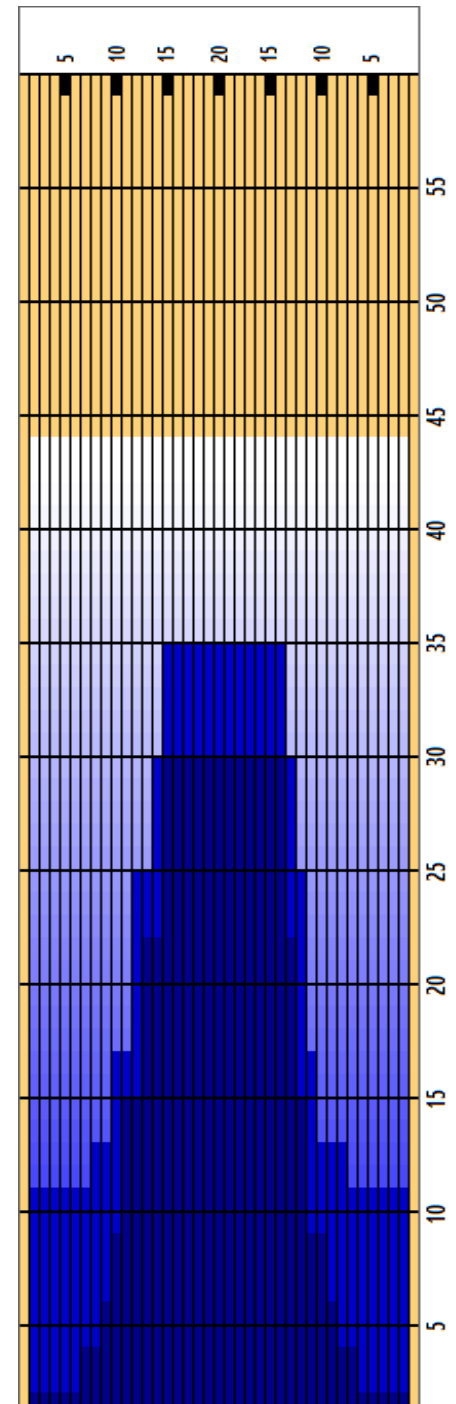
	START	STOP	LOADS	SPEED	BUFFER	TANK	CROSSED	START	END	FEET	T.OIL
1	2L	2R	3	10	3	A	111	0.0	2.8	2.8	5550
2	7L	7R	1	14	3	A	27	2.8	4.7	1.9	1350
3	9L	9R	1	14	3	A	23	4.7	6.6	1.9	1150
4	10L	10R	1	18	3	A	21	6.6	9.1	2.5	1050
5	11L	12R	3	14	3	A	54	9.1	15.0	5.9	2700
6	13L	13R	3	18	3	A	45	15.0	22.6	7.6	2250
7	15L	14R	3	18	3	A	36	22.6	30.2	7.6	1800
8	2L	2R	0	18	3	A	0	30.2	35.0	4.8	0
9	2L	2R	0	22	3	A	0	35.0	39.0	4.0	0
10	2L	2R	0	30	3	A	0	39.0	44.0	5.0	0

	START	STOP	LOADS	SPEED	BUFFER	TANK	CROSSED	START	END	FEET	T.OIL
1	2L	2R	0	22	3	A	0	44.0	35.0	-9.0	0
2	15L	14R	2	18	3	A	24	35.0	29.9	-5.1	1200
3	14L	13R	2	18	3	A	28	29.9	24.8	-5.1	1400
4	12L	12R	3	18	3	A	51	24.8	17.2	-7.6	2550
5	10L	11R	2	14	3	A	40	17.2	13.3	-3.9	2000
6	8L	8R	1	14	3	A	25	13.3	11.4	-1.9	1250
7	2L	2R	1	14	3	A	37	11.4	9.5	-1.9	1850
8	2L	2R	0	10	3	A	0	9.5	0.0	-9.5	0

Cleaner Ratio Main Mix NA Forward  
 Cleaner Ratio Back End Mix NA Reverse  
 Cleaner Ratio Back End Distance NA Combined  
 Buffer RPM: 4 = 700 | 3 = 500 | 2 = 200 | 1 = 100



Item	3L-7L:18L-18R	8L-12L:18L-18R	13L-17L:18L-18R	18L-18R:17R-13R	18L-18R:12R-8R	18L-18R:7R-3R
Description	Outside:Middle	Middle:Middle	Inside:Middle	Middle: Inside	Middle:Middle	Middle:Outside
Track Zone Ratio	6.19	2.5	1.1	1.04	2.77	6.19

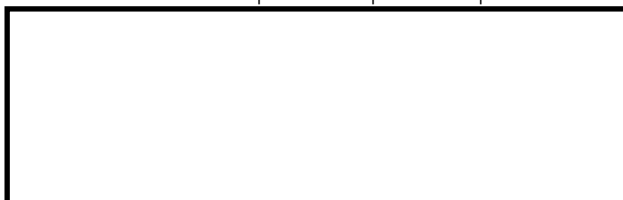


Oil Pattern Distance	36	Reverse Brush Drop	33	Oil Per Board	50 ul
Forward Oil Total	16.35 mL	Reverse Oil Total	12.2 mL	Volume Oil Total	28.55 mL
Tank Configuration	A Only	Tank A Conditioner		Tank B Conditioner	

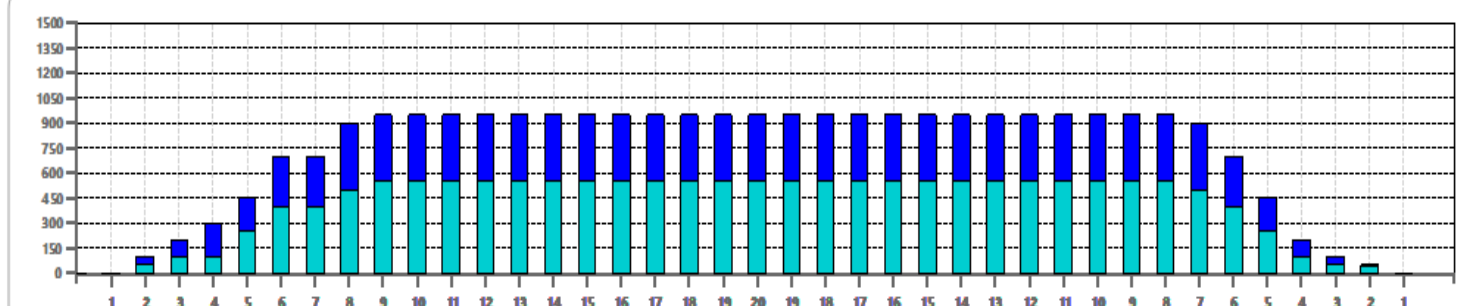
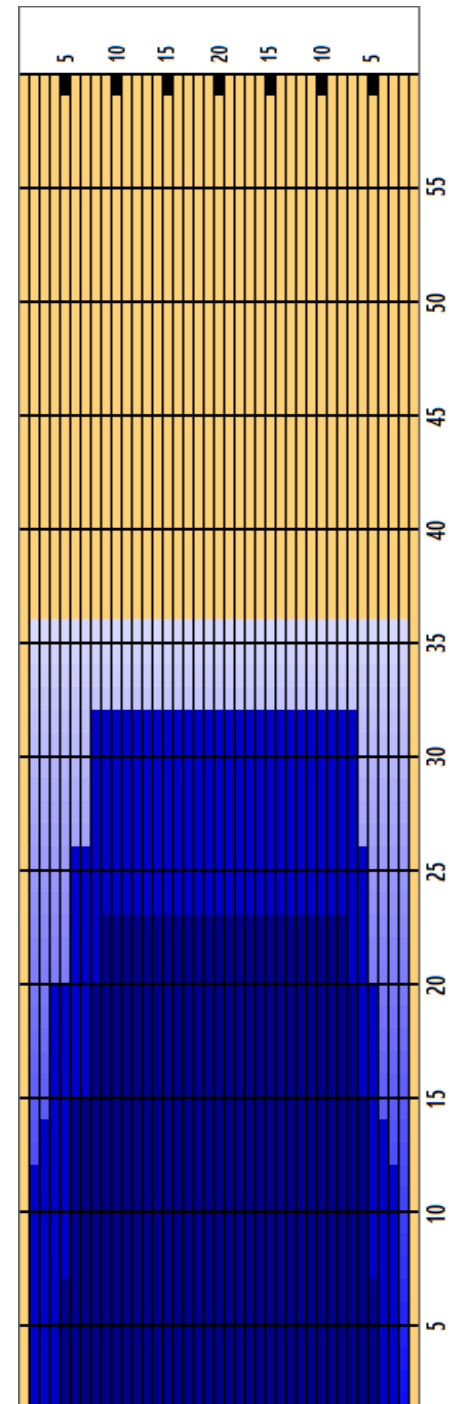
	START	STOP	LOADS	SPEED	BUFFER	TANK	CROSSED	START	END	FEET	T.OIL
1	2L	2R	1	14	3	A	37	0.0	0.0	0.0	1850
2	3L	4R	1	14	3	A	34	0.0	1.9	1.9	1700
3	5L	5R	3	14	3	A	93	1.9	7.8	5.9	4650
4	6L	6R	3	18	3	A	87	7.8	15.4	7.6	4350
5	8L	7R	2	18	3	A	52	15.4	20.5	5.1	2600
6	9L	8R	1	18	3	A	24	20.5	23.0	2.5	1200
7	2L	2R	0	18	3	A	0	23.0	27.0	4.0	0
8	2L	2R	0	22	3	A	0	27.0	32.0	5.0	0
9	2L	2R	0	30	3	A	0	32.0	36.0	4.0	0

	START	STOP	LOADS	SPEED	BUFFER	TANK	CROSSED	START	END	FEET	T.OIL
1	2L	2R	0	30	3	A	0	36.0	32.0	-4.0	0
2	8L	7R	2	22	3	A	52	32.0	25.8	-6.2	2600
3	6L	6R	2	22	3	A	58	25.8	19.6	-6.2	2900
4	4L	5R	2	18	3	A	64	19.6	14.5	-5.1	3200
5	3L	4R	1	18	3	A	34	14.5	12.0	-2.5	1700
6	2L	3R	1	14	3	A	36	12.0	10.1	-1.9	1800
7	2L	2R	0	14	3	A	0	10.1	0.0	-10.1	0

Cleaner Ratio Main Mix                      NA              Forward  
 Cleaner Ratio Back End Mix                NA              Reverse  
 Cleaner Ratio Back End Distance          NA              Combined  
 Buffer RPM: 4 = 700 | 3 = 500 | 2 = 200 | 1 = 100



Item	3L-7L:18L-18R	8L-12L:18L-18R	13L-17L:18L-18R	18L-18R:17R-13R	18L-18R:12R-8R	18L-18R:7R-3R
Description	Outside:Middle	Middle:Middle	Inside:Middle	Middle: Inside	Middle:Middle	Middle:Outside
Track Zone Ratio	2.02	1.01	1	1	1	2.02





# PBA ANTHONY 43 (2025)

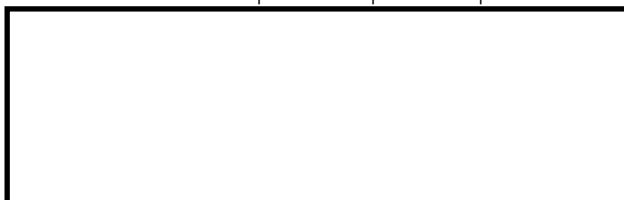


Oil Pattern Distance	43	Reverse Brush Drop	36	Oil Per Board	Multi ul
Forward Oil Total	20.105 mL	Reverse Oil Total	14.27 mL	Volume Oil Total	34.375 mL
Tank Configuration	A Only	Tank A Conditioner	Kegel	Tank B Conditioner	Kegel

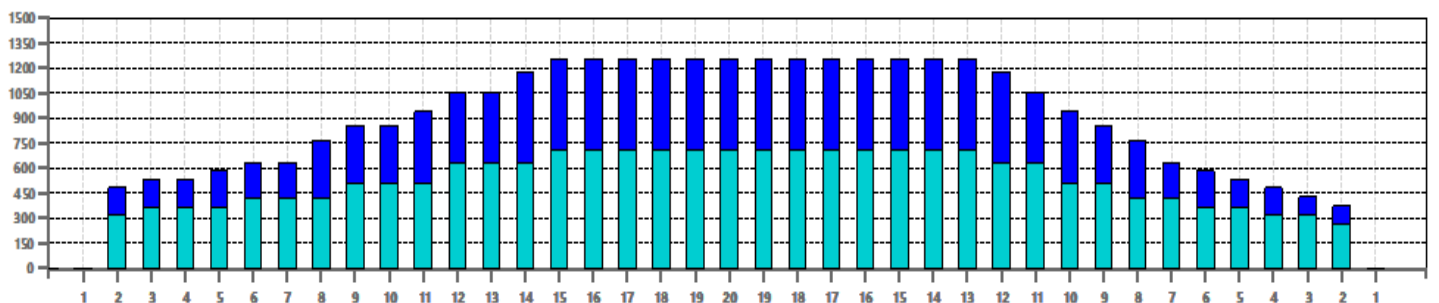
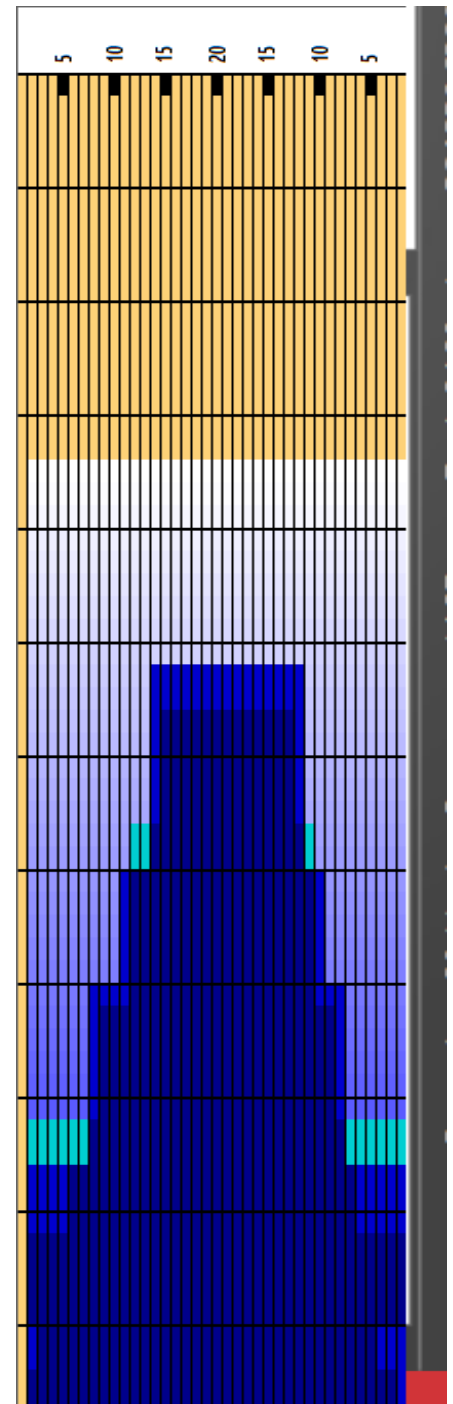
	START	STOP	LOADS	MICS	SPEED	BUFFER	TANK	CROSSED	START	END	FEET	T.OIL
1	2L	2R	2	60	14	3	A	74	0.0	1.9	1.9	4440
2	2L	3R	1	55	14	3	A	36	1.9	3.8	1.9	1980
3	3L	5R	1	50	14	3	A	33	3.8	5.7	1.9	1650
4	2L	2R	2	50	14	3	A	74	5.7	9.6	3.9	3700
5	6L	7R	1	50	18	3	A	28	9.6	12.1	2.5	1400
6	2L	2R	1	45	18	3	A	37	12.1	14.6	2.5	1665
7	9L	9R	2	45	18	3	A	46	14.6	19.7	5.1	2070
8	12L	11R	3	40	18	3	A	54	19.7	27.3	7.6	2160
9	15L	13R	2	40	18	3	A	26	27.3	32.4	5.1	1040
10	2L	2R	0	40	18	3	A	0	32.4	37.0	4.6	0
11	2L	2R	0	40	22	3	A	0	37.0	43.0	6.0	0

	START	STOP	LOADS	MICS	SPEED	BUFFER	TANK	CROSSED	START	END	FEET	T.OIL
1	2L	2R	0	40	22	3	A	0	43.0	34.0	-9.0	0
2	14L	12R	3	40	22	3	A	45	34.0	24.7	-9.3	1800
3	11L	10R	2	40	18	3	A	40	24.7	19.6	-5.1	1600
4	8L	8R	3	45	18	3	A	75	19.6	12.0	-7.6	3375
5	2L	2R	1	50	14	3	A	37	12.0	10.1	-1.9	1850
6	5L	6R	1	50	14	3	A	30	10.1	8.2	-1.9	1500
7	2L	4R	1	55	14	3	A	35	8.2	6.3	-1.9	1925
8	2L	2R	1	60	14	3	A	37	6.3	4.4	-1.9	2220
9	2L	2R	0	60	10	3	A	0	4.4	0.0	-4.4	0

Cleaner Ratio Main Mix NA Forward  
Cleaner Ratio Back End Mix NA Reverse  
Cleaner Ratio Back End Distance NA Combined  
Buffer RPM: 4 = 700 | 3 = 500 | 2 = 200 | 1 = 100



Item	3L-7L:18L-18R	8L-12L:18L-18R	13L-17L:18L-18R	18L-18R:17R-13R	18L-18R:12R-8R	18L-18R:7R-3R
Description	Outside:Middle	Middle:Middle	Inside:Middle	Middle: Inside	Middle:Middle	Middle:Outside
Track Zone Ratio	2.15	1.4	1.05	1	1.31	2.36





# PBA MONACELLI 40 (2025)

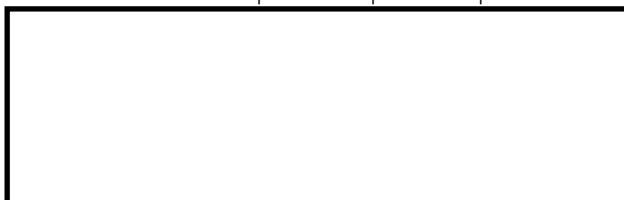


Oil Pattern Distance	40	Reverse Brush Drop	34	Oil Per Board	Multi ul
Forward Oil Total	15.68 mL	Reverse Oil Total	11.79 mL	Volume Oil Total	27.47 mL
Tank Configuration	A Only	Tank A Conditioner	KEGEL	Tank B Conditioner	KEGEL

	START	STOP	LOADS	MICS	SPEED	BUFFER	TANK	CROSSED	START	END	FEET	T.OIL
1	2L	2R	4	45	14	3	A	148	0.0	5.9	5.9	6660
2	6L	7R	3	45	14	3	A	84	5.9	11.8	5.9	3780
3	10L	9R	4	45	18	3	A	88	11.8	22.0	10.2	3960
4	13L	12R	2	40	18	3	A	32	22.0	27.1	5.1	1280
5	2L	2R	0	40	18	3	A	0	27.1	32.0	4.9	0
6	2L	2R	0	40	18	2	A	0	32.0	36.0	4.0	0
7	2L	2R	0	40	18	1	A	0	36.0	40.0	4.0	0

	START	STOP	LOADS	MICS	SPEED	BUFFER	TANK	CROSSED	START	END	FEET	T.OIL
1	2L	2R	0	40	30	3	A	0	40.0	30.0	-10.0	0
2	12L	11R	2	40	22	3	A	36	30.0	23.8	-6.2	1440
3	11L	10R	3	45	18	3	A	60	23.8	16.2	-7.6	2700
4	9L	8R	4	45	14	3	A	96	16.2	8.3	-7.9	4320
5	2L	2R	2	45	14	3	A	74	8.3	4.4	-3.9	3330
6	2L	2R	0	45	14	3	A	0	4.4	0.0	-4.4	0

Cleaner Ratio Main Mix NA Forward  
Cleaner Ratio Back End Mix NA Reverse  
Cleaner Ratio Back End Distance NA Combined  
Buffer RPM: 4 = 700 | 3 = 500 | 2 = 200 | 1 = 100



Item	3L-7L:18L-18R	8L-12L:18L-18R	13L-17L:18L-18R	18L-18R:17R-13R	18L-18R:12R-8R	18L-18R:7R-3R
Description	Outside:Middle	Middle:Middle	Inside:Middle	Middle: Inside	Middle:Middle	Middle:Outside
Track Zone Ratio	3:27	1:46	1	1	1:24	3:57

